

# Emergency relief program for families affected by COVID-19

# Background



- Imaginalco is a civil society organization that since 2012 has been developing a comprehensive accompaniment program for children and young people in situations of social exclusion in the municipality of Malinalco. We seek that children and young people live fuller lives and choose their ways of life. We do this through the development of psychosocial skills, positive youth leadership, healthy family environments, and the strengthening of community cohesion.
- Promoting the full development of children and young people implies working with them and their families in a medium-term accompaniment model and having a constant presence in the community.

- The health emergency has social and economic implications in the short, medium and long term, which strongly violate the human rights of people, particularly those who are in a situation of social exclusion.
- Grassroots organizations are close to the affected population, have generated trust, know the local situation closely, and therefore can be a valuable interlocutor to mitigate the effects of the health emergency, and address the associated social and economic problems.
- In the current situation, it is extremely important to clearly identify the specific effects that this crisis is having on people's rights, in order to channel aid appropriately.
- It is also important to see beyond the immediate crisis, and to generate the conditions that in the medium and long term allow the recovery of the economy, social cohesion, and the full exercise of the rights of people.

# Objectives



## General

- Promote access to human rights for vulnerable families in Malinalco before the socioeconomic effects generated by the health emergency.

## Specific

- Disseminate information to help prevent or reduce health damage generated by COVID19
- Detect damages generated by the health emergency that violate the rights of families and their members
- Channel emergency help (medicines and primary products)
- Prevent and address situations of domestic violence that arise in the current situation
- Mitigate the adverse economic effects in the medium term
- Ensure the right to the quality education of the children and youth of the participating families
- Promote the regeneration of the local economy through the development of productive projects in which members of the families of the program participate.

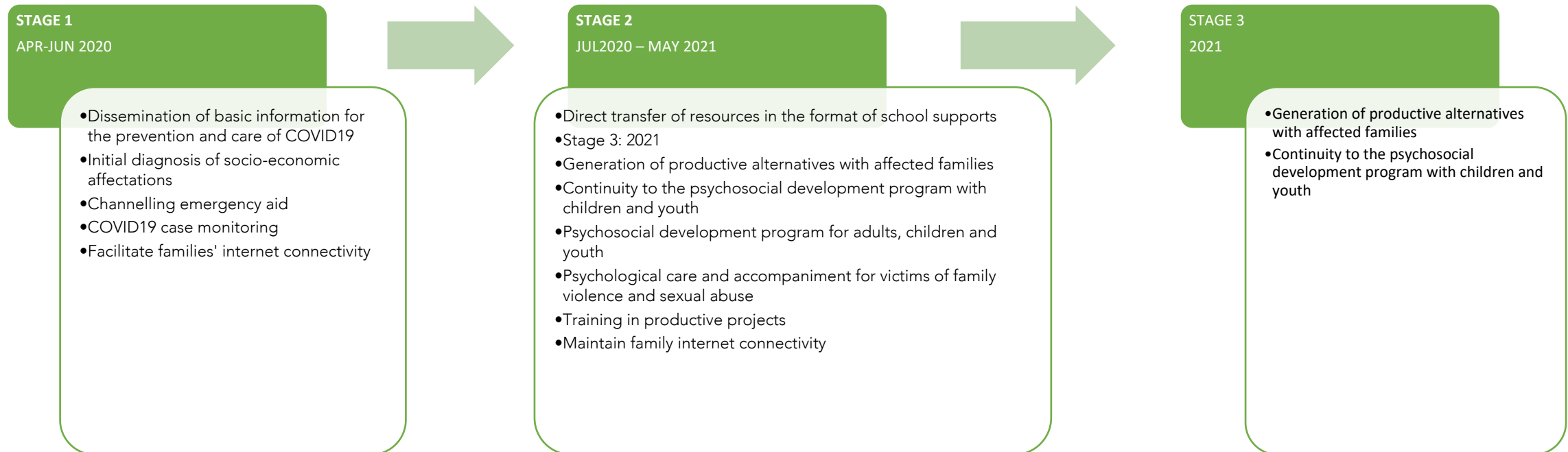
# Proposal



- Work will be done with 50 families, who are in poverty in the municipality of Malinalco, and in which some of its members already participate in Imaginalco's programs.
- Monitoring will be carried out to detect socioeconomic effects and emerging needs, and identify possibilities to address them.

# Proposal

- Work will be done with 50 families, who are in poverty in the municipality of Malinalco, and in which some of its members already participate in Imaginalco's programs.
- Monitoring will be carried out to detect socioeconomic effects and emerging needs, and identify possibilities to address them.



# Target Population



- Work will be done with 50 families, who are in a situation of poverty according to the CONEVAL indicators, and for whom the effects of the health emergency may increase the degree of social exclusion.
- Priority will be given to families that have at least one member who participates in the Imaginalco programs, seeking to ensure that this project is articulated with our comprehensive care model.

# STAGE 1



Selection of 50 families:

- Presence of possible unreported cases of COVID19
- Economic effects
- Change in family dynamics (violence, alcohol consumption, family life)
- Access to children's education (internet access for distance classes, parental support?)

Dissemination of information for access to health

- Prevention of COVID19: measures
- Symptoms and what to do (when to go and to which hospitals)
- Right to health: what are you entitled to as a citizen, in this situation?

Identification of families in need for channelling emergency aid

Facilitate internet access from home to families without connectivity



# STAGE 2



- School support program
  - Direct transfer of money to families in exchange for:
    - School permanence of children and youth
    - Participation of children and youth in extracurricular pedagogical support program
    - Participation of mothers and fathers in the parenting program (development of parenting skills)
- Psychological support for people affected by domestic violence and sexual abuse
- Maintain internet access from home, for families without connectivity

# STAGE 3



**Xoloplastics:** Productive project for recycling plastic to turn it into works of art in exchange for donations. It generates training employment for young people in a situation of social exclusion.

**Six Garritas:** Productive project to sell second-hand items. It generates training employment for women in a situation of social exclusion and in charge of supporting their families.

**Productive gardens:** Agroecological production project aimed at families

**Xolotlán Collective:** Productive project for the production and sale of handicrafts. It generates training employment for young people in a situation of social exclusion.

# Summary of Budget in HKD

3 Stages of Program	Specific costs of COVID-19 Program	HKD 401,900.00
	Average Monthly cost of COVID-19 Program	HKD 28,707.14
	Monthly cost per family	HKD 853.19